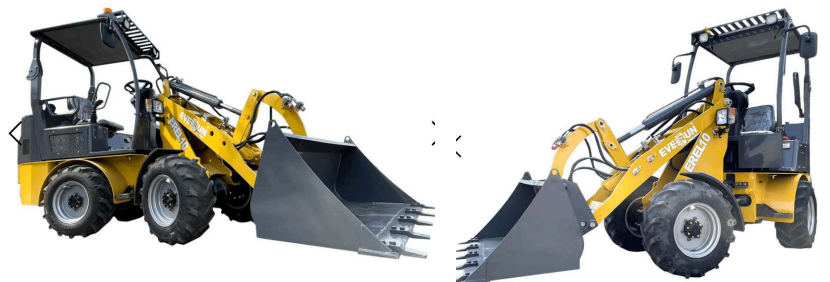


EVE**RUN**[®]
America

EREL10



EVE**RUN**[®]
America



EVERUN EREL10 Electric Wheel Loader

Standard Configuration

Standard configuration with Quick Hitch and Electric Joystick



Feature Term No.	Size/Details EREL10
Rated Load	1000kg
Bucket Rated Capacity	0.26m ³
Dumping Height(at 40°)	1821mm
Lifting Height	3120mm
Dumping Reach	829mm
Maximum breakout force	13kN
Max. Grade Ability	20
Minimum turning radius	2466mm
Oscillation angle	8°
Overall dimension (L×W×H)	3672*1270*2380mm
Wheel Base	960mm
Min Ground Clearance	210mm
Net Weight	2150kg
Battery Model No.	3-EVF-200A
Rated capacity (3hr)	200Ah
Working Hours	4h
Motor No	YQP5.72AF.48P
Displacement	14mL/r
Type	29*12.50-15
Working Pressure	0.3MPa
Type of Steering Hydraulic System	Full Hydraulic Steering System
Type of Steering Pump	External Gear Pump
Steering Cylinder Bore	Ø65
System Pressure	16MPa
Dumping Cylinder-Bore	ø50
Service Brake	Drum Brake
Brake Drum	240mm
Praking Brake	Drum Brake
Hydraulic Oil Tank	40L
Brake Fluid	0.8L

